

# Zoom H4n - getting started.

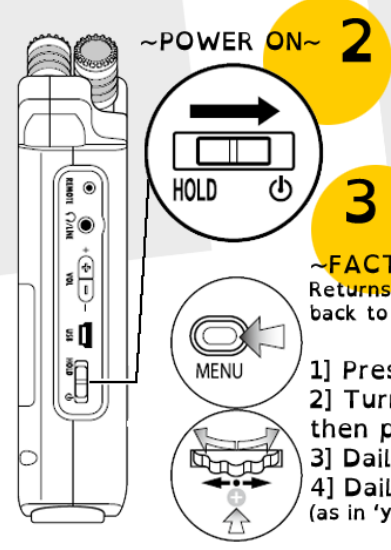
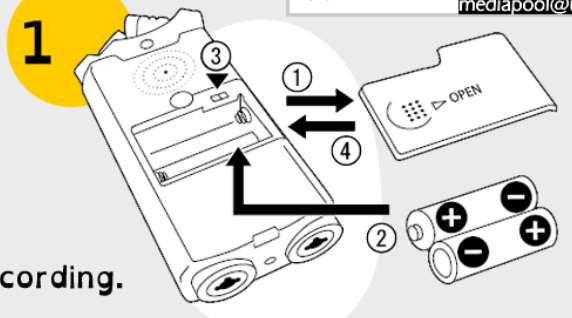
~Battery installation~  
Install two AA batteries

ART LIBRARY  
ZoomH4n-QG



Media Pool  
865-974-9230  
mediapool@utk.edu

- 1] Install 2xAA batteries.
- 2] Power the unit on.
- 3] Reset the recorder.
- 4] (Re)Format the SD card.
- 5] Plug in headphones, set level to 50.
- 6] Press the INPUT "Mic" button.
- Then verify that the 'Stereo' mode indicator light is on.
- 7] Press "Rec" and the button will blink.
- 8] Adjust your recording levels before you start live recording.
- 9] Start recording: Press "Rec" again.
- 10] Stop recording: press "Stop" button.



**2** ~POWER ON~  
HOLD

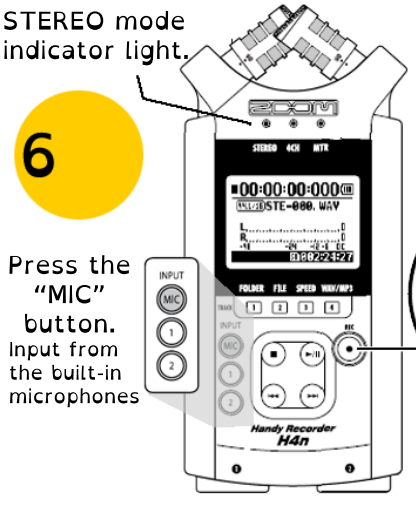
**3** ~FACTORY RESET~  
Returns all the settings back to the factory defaults.

- 1] Press the "Menu" button.
- 2] Turn the dial to "SYSTEM", then press in on the dial to select.
- 3] Dial to "FAC RESET" and select.
- 4] Dial to "YES" and select. (as in 'yes, I am sure')

**4** ~FORMAT THE CARD~  
When you format the SD card, all data will be deleted. SD cards should be formatted by the H4n before using.

- 1] Press the "Menu" button.
- 2] Turn the dial to "SD CARD", then press in on the dial to select.
- 3] Dial to "FORMAT" and select.
- 4] Dial to "YES" and select. (as in 'yes, I am sure')

**5** Headphone Vol(ume)



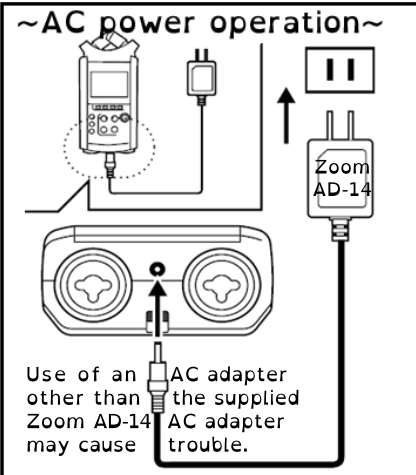
**6** STEREO mode indicator light.  
Press the "MIC" button.  
Input from the built-in microphones

**7** REC blinks  
Press.

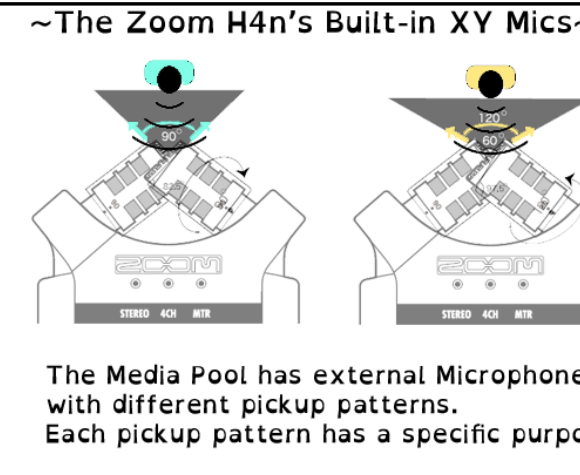
**8** ~RECORD LEVEL~  
While the "Rec" button is blinking Press the "REC LEVEL" "+" to amplify reception, or Press the "REC LEVEL" "-" to reduce reception. To set your recording level. The optimum pickup range is "-24" to "-6", so, shoot for "-12"

**9** REC or Press. light on  
Counter begins to count up.

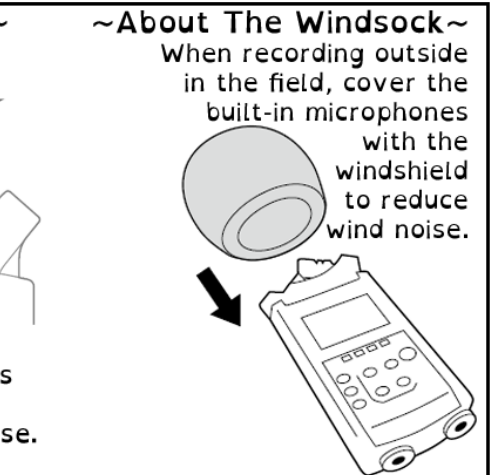
**10** Press. light off  
Counter returns 0:00:00:00:00



~AC power operation~  
Use of an AC adapter other than the supplied Zoom AD-14 AC adapter may cause trouble.



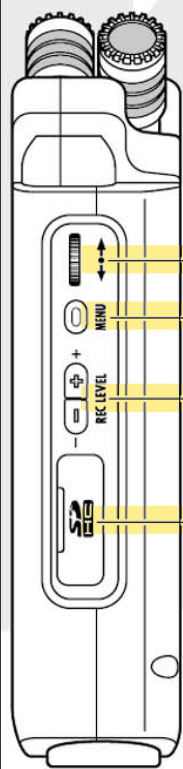
~The Zoom H4n's Built-in XY Mics~  
The Media Pool has external Microphones with different pickup patterns. Each pickup pattern has a specific purpose.



~About The Windsock~  
When recording outside in the field, cover the built-in microphones with the windshield to reduce wind noise.

# Zoom H4n - parts

[RIGHT PANEL]



90 / 120°  
Variable XY  
Stereo microphones  
(Built-in)

STEREO  
mode indicator

[DIAL]

[MENU] button

REC LEVEL [+ / -]

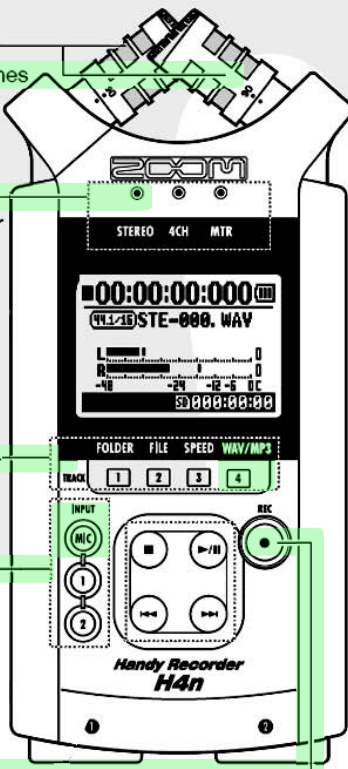
Short out button  
[4] <WAV/MP3>

SD card slot

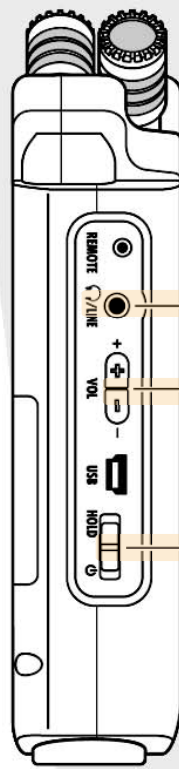
INPUT: [MIC]

[REC] Button

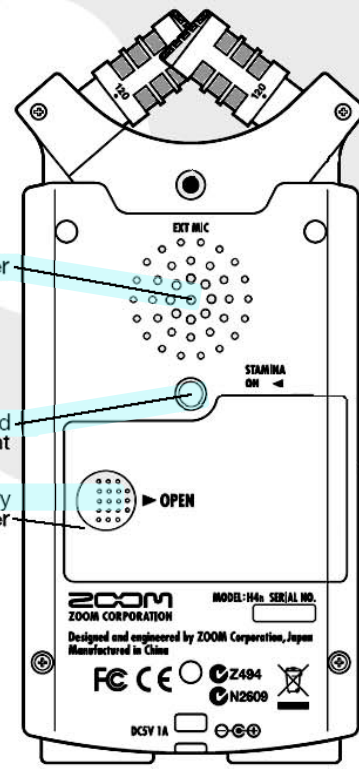
[FRONT PANEL]



[LEFT PANEL]



[BACK PANEL]



mono speaker

output jack

output VOLUME

Tripod mount

Battery cover

POWER switch

## ~Battery Related stuff~

The H4n can use conventional alkaline and Ni-MH (nickel metal hydride) batteries.

### Battery life indicator:



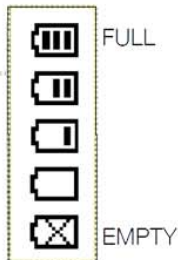
The remaining life of the battery will be measured more precisely if the 'battery type' is set.

"Alkaline" is the factory default.

### To change to Ni-MH

- 1] Press the 'Menu'.
- 2] Dial to 'System' and select.
- 3] Dial to 'Battery' and select.
- 4] Dial to Ni-MH and select.

When "Low Battery!" indication appears, immediately switch off unit and exchange batteries, or shift power source to AC adapter.



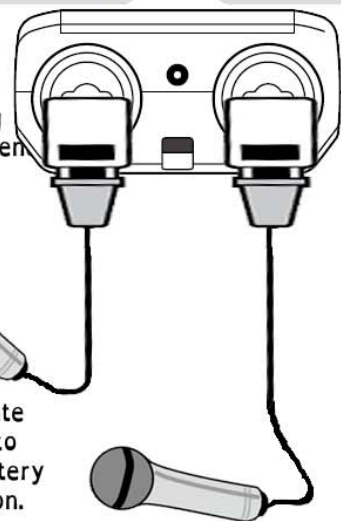
## ~Connecting An External Microphone~

Any microphone, electric instrument (guitar, keyboard) or line level source.

INPUT[1]

INPUT[2]

To connect a microphone you connect XLR plugs in to INPUT [1] and/or INPUT [2]. If you need phantom power, i.e. when using a condenser microphone, set it up in the menu.



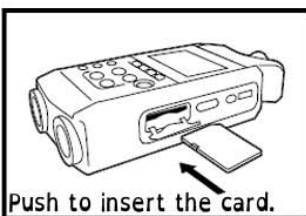
## ~Phantom Power for External Mics~

- 1] Press the "Menu" button.
- 2] Dial to <INPUT> and select
- 3] Dial to <PHANTOM> and select.
- 4] Dial to the voltage and select.

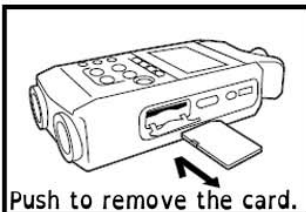
Some condenser microphones cannot operate with +24V phantom power, but comparing to +48V setting this function is useful for battery operation to economize electric consumption.

## ~CAUTIONS WHEN INSERTING SD CARD~

- You can use up to 32GB SD cards.
- SD cards may need to be formatted in the H4n, even if has been formatted in another machine.
- When "No Card" is seen on the display at boot-up, check if the SD card is correctly inserted.
- When "Format Card" is seen on the display at booting-up, this means the SD card has not been formatted in the H4n. To format, press [DIAL] down and select OK button.
- If the booting-up screen says "Card Protect": turn the H4n off, remove the SD card and release this protect slide/lock switch of the SD card.



Push to insert the card.



Push to remove the card.

## ~WAV Files~

- The WAV FILES with no compression are used for high quality sound recording.
- The WAV files recorded on H4n correspond to BWF (Broadcast Wave Format).

### VARIETY OF WAV FILES

- 44.1/48/96 kHz indicates the sampling rate.
- 16/24-bit indicates the bit depth.

The larger the number, the higher the sound quality, but the files that are created are larger as well.

### RECORDING OPTIONS:

- 44.1kHz/16bit (default)
- 44.1kHz/24bit
- 48kHz/16bit
- 48kHz/24bit
- 96kHz/16bit
- 96kHz/24bit